



Enhance your time on the water

Dome-In Installation Instructions

For installs **without** previous dome-studs on the floor



Tools Needed:

- Electric drill with 1/16" or 7/64" and 1/8" drill bits
- Phillips screwdriver
- Silicone marine sealer
- Masking tape
- Snap studs and nylon washers

We Recommend

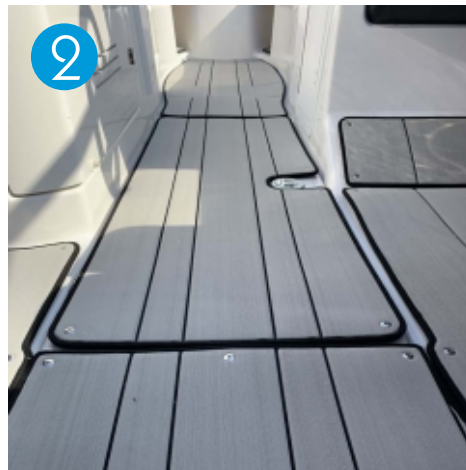
We recommend doing each dome one at a time to make sure you maintain perfect alignment without wrinkles or humps

Preparation

Wash and dry the boat thoroughly

1

Open package, remove and inspect the Boat Dek. Lay all mats on a flat surface to relax and flatten out after being packaged. Make sure there are no missing pieces.



Lay all the mats in the proper location on the cockpit floor. Take care to align all the edges and the pattern lines for one continuous look.



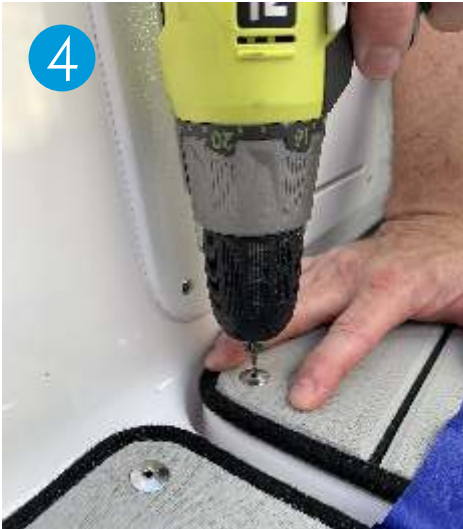
Using the masking tape, tape all the pieces into place to temporarily hold them while installing the studs into the deck of the boat



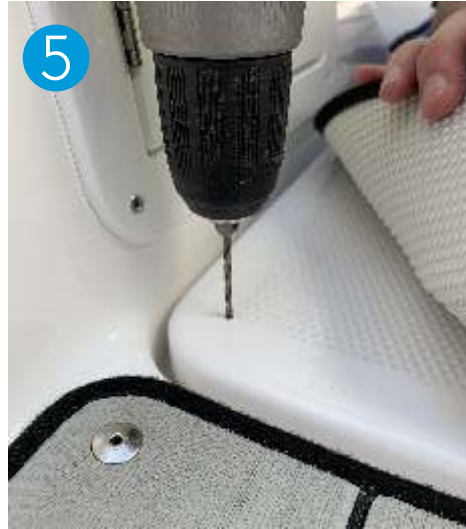
Enhance your time on the water

Dome-In Installation Instructions

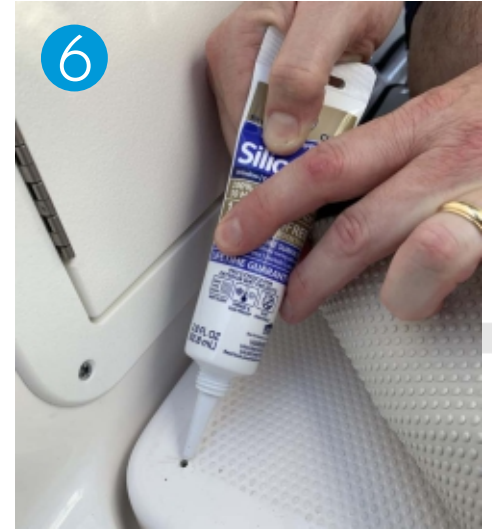
For installs **without** previous dome-studs on the floor



Your new Boat Dek Dome-In series mats utilizes a unique drill guide snap cap. These snaps have a pilot or guide hole to allow for perfect alignment every time. Working from the front of the boat to the rear, use the 1/16" or 7/64" drill bit. Drill your first pilot hole through the snap itself into the deck of the boat.



Lift the corner or edge of the Boat Dek and drill the final hole for the stud with the 1/8" drill bit.



Apply a small amount of sealer to the hole



Using the screwdriver, tighten the snap stud through the washer the washer in the hole and snap the mat in.



Repeat steps 4-7 for all remaining domes being careful to make sure the Boat Dek stay aligned and are laying flat before drilling each hole.

Should you require additional assistance please feel free to email us at: sales@boatdek.co.nz